

- Scholarship applications will be available by end of January
- Trivia Nights
- St. Charles County Day at the Capital
- New Hours for New Melle Clinic
- Membership Dues

INSIDE
THIS
ISSUE:

Directory	2
Scholarships	2
Trivia Night	2
Tracker Designs	3
St. Charles County Day	4

New Melle Business News

VOLUME 4, ISSUE 1

JANUARY 1, 2008

General Membership Meeting

When: Thursday, January 17, 2008

Where: New Melle VFW

Time: 11:30 am networking, 12:00 pm meeting

The lunch will be a salad bar, soup, chicken salad sandwich, French fries and a drink for \$6.00. We will be go over the budget for 2008 and discussing some upcoming events. It would be great to see some new faces join the meeting. Please call 636-828-5600 or email at info@newmellechamber.com if you have any questions.



Spring Fling

Spring Fling this year will be called "\$5000.00 Give-Away Spring Fling" "Dinner & Dance"

It will be held at the VFW on March 8th from 5:30pm-11:30pm

Tickets and fliers will be available at the January chamber meeting

Dinner will be catered by The American Bounty and a live band will perform

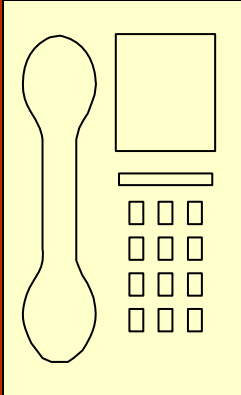
Tourism Meeting on January 17

County Councilman Joe Brazil, along with David Rosenwasser from The Greater St. Charles Convention and Visitors Center will hold a Tourism planning meeting, Thursday, January 17th at 2:00 p.m. The meeting will take place at Wine Country Gardens, 2711 S. Hwy. 94, Defiance, and be hosted by owners Bill and Chris Schaul. Anyone who has a stake in St. Charles County tourism is urged to attend, particularly those who provide lodging, operate tourist attractions, or own businesses that rely heavily on tourism. Rosenwasser, who is Director of the Greater St. Charles Convention and Visitors Bureau, said state tourism grant programs will change in fiscal

year 2009, which begins July 1, 2008. The new grant programs will encourage a more county-wide approach to tourism projects, and Rosenwasser said he hopes this meeting will become the beginning of ongoing discussions and ultimately lead to a more unified and cohesive approach to promoting and marketing tourism throughout St. Charles County. He said by working together, affected areas or entities in the county could potentially achieve more "bang for the buck" in grant dollars which would be mutually beneficial to all involved. Rosenwasser said he also hopes to clarify information on local tourism taxes. For more information on the meeting, please contact Joe Brazil at 636-798-3017.

Election Results

Congratulations and thank you to our new officers elected at the November meeting: President-Elect-Chris Ryan, Treasurer-Frank Klaas, Secretary-Renee Rigano. They officially took their positions on January 1, along with Janet Hespen who will be President in 2008. Special thanks to the retiring officer and board member, Tiffany Rovin and Joyce Schiermeier. We appreciate their time and dedication to the chamber.



Directory

Changes to your directory listing and advertisements for the directory were due on December 31st. If you wish to have an ad in the directory, or would like to change the way your contact information is listed, and have not sent in the paperwork, please mail it in as soon as possible.

Membership Dues

There are still several businesses that have not renewed their membership. If you would like to be in the directory for 2008, please send in your membership fee of \$50.00 as soon as possible.

Scholarships

Scholarship applications for the 2007-2008 school year should be ready by the end of January. If you know of a college bound student that lives within the New Melle Fire Protection District, urge them to contact Brenda Molitor at 636-828-5600 for an application or they can get the application and recommendation forms from the website at www.newmellechamber.com.

New Hours at New Melle Clinic

The New Melle Clinic recently changed it hours, closing on Mondays as well as Sundays. Current hours are 10 a.m. to 6 p.m. Tuesday – Fridays and 9 a.m. to 12 noon on Saturdays. Sometime in January, the clinic may also close to medical patients on Wednesdays after 2 p.m. to accommodate counseling sessions, but that schedule is still subject to change at this time. To verify hours or for other information, contact the clinic at 636-398-8188.

Note from the President:

-2008 is here! The chamber hopes that it will be prosperous year for the businesses and organizations of our community.

-Please try and attend the next Chamber meeting on Jan. 17th at the New Melle VFW Post 5651, 555 Foristell Rd. We have lots to discuss with memberships, budget review and much more as we start off the new year.

-For the upcoming Feb. And March Chamber meetings, a RSVP will be required to have your luncheon ordered.

-Feb. meeting will be at the New Melle Fire Station at 3705 Mill St. in the basement meeting room.

-Don't forget this year to get your free "Spotlight on the Website".

Hello to all Chamber members, if we haven't met yet, I look forward to meeting you. I encourage you to become more involved with our Chamber events. I know you are all busy people. I hope I can help the Chamber be effective and responsive to help each business and organization reach their goals. Any suggestions or comments please don't hesitate to contact me.

Thanks for your support,

Janet Hespen

636-398-6420

E-mail: janethspn@yahoo.com

Vision Leadership Annual Fundraising Event to Attract Trivia Buffs

Vision St. Charles Country Leadership is planning a fun-filled Trivia Night on Saturday, January 12, 2008 at 7pm. The event will be held at the O'Fallon Elk's Lodge, 1163 Tom Ginnever. Cost for a team of 10 will be \$160. There is a 30 team maximum, first come-first served. There are round sponsorships available for \$50. Free beer and soda, door prizes, silent auction, a 50/50 raffle and prize balloons

are included. Checks should be made payable to Vision St. Charles County Leadership.

Vision's mission is to educate community and business leaders by providing experiences that will increase awareness, develop leadership skills and motivate participants to be actively engaged in St. Charles County. For more info on the Trivia Night or to register for the event, please contact Bruce Sowatsky at 636-939-6200 or 314-374-3096.

Schedule of Events

- } Jan 6—Super Bowl of Music at Immaculate Heart of Mary Church at 2pm. Free to public
- } Jan 7—New Melle Lions Club Meeting at 7pm
- } Jan 8—New Melle Sports & Recreation Meeting at 7pm
- } Jan 8 & 22—New Melle Planning & Zoning Meeting at 7pm
- } Jan 9 & 25—New Melle Steak & Fish Night at the VFW at 5pm
- } Jan 13—Breakfast at IHM at 8am
- } Jan 16—New Melle Board of Aldermen meeting at 7pm
- } Jan 17—New Melle Chamber of Commerce Meeting at the VFW at 11:30am
- } Jan 24—New Melle VFW meeting at 7:30pm
- } Jan 25—Trivia Night at the New Melle Sports and Recreation at 7pm

JANUARY 2008

Sun	Mon	Tue	Wed	Thu	Fri	Sat
		1	2	3	4	5
6 Super-bowl of Music Breakfast	7 New Melle Lions Club Meeting	8 New Melle Sports & Rec Meeting New Melle P&Z Meeting	9	10	11 New Melle VFW Steak & Fish	12
13 Breakfast	14	15	16 New Melle Board of Aldermen Meeting	17 New Melle Chamber of Commerce Meeting	18	19
20	21	22 New Melle P&Z Meeting	23	24 New Melle VFW Meeting	25 New Melle VFW Steak & Fish Trivia Night	26
27 Breakfast	28	29	30	31		

Tracker Designs of Wentzville to Launch New Rage Site in '08

The River City Rage announced today they have signed a three-year agreement to have a locally owned website development company, Tracker Designs, remodel their current website. As part of the agreement, Tracker Designs will also be the title partner of the new, weekly River City Rage newsletters. Fans can sign up for the newsletter and stay up-to-date with all of the Rage news at rage-football.com.

Tracker Designs is a Wentzville, MO based website development and marketing firm that has been servicing local and international clients since 1997. Tracker Designs was chosen over many other de-

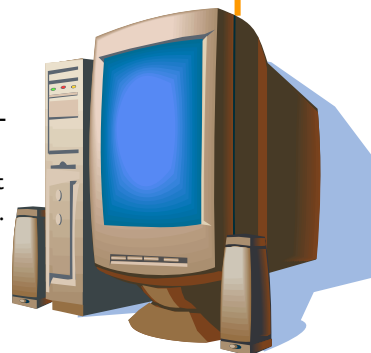
sign firms based on their professionalism and knowledge of the industry. Their unique and modern designs are the perfect fit for the new Rage Football website. The new River City Rage website is scheduled to be launched in February 2008.

"The Newsletter will be a great source of information for their fans," says Chris McAmis, owner of Tracker Designs. "The newsletter will be packed full of news, events and promotions that the Rage is creating for 2008. It will keep all of the Rage fans up-to-date on current events as well as future happenings. Tracker Designs is very excited to be partnered with the

Rage for the 2008 season."

The Rage season begins Sunday, March 2nd at 3:00 with an exhibition game against the Missouri Wildcats. The regular season kicks off the following Sunday, March 9th, as the Rage host the Colorado Ice at The Family Arena also at 3:00.

The River City Rage Professional Indoor Football team is a member of the United Indoor Football League. All Rage home games are played at The Family Arena in St. Charles, MO. Rage season tickets are now on sale for the 2008 season and prices start for as low as \$10. For ticketing information contact the Rage ticket office at (636) 896-4285.





**New Melle Chamber of
Commerce**

P.O. Box 212

New Melle, MO 63365

Phone: 636-828-5600

Fax: 636-433-2012

E-mail: info@newmellechamber.com



**New Melle Chamber of Commerce
2008 Board of Directors**

President

Janet Hespen
Fitness First
(636) 398-6420

President-Elect

Chris Ryan
Cuivre River Electric Coop
(636) 695-4732

Treasurer

Frank Klaas
The Missouri Bank
(636) 327-4900

Secretary

Renee Rigano
Curves for Women
(636) 828-2009

Directors

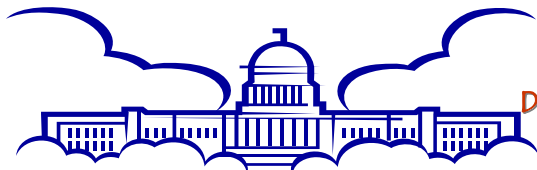
Greg Faron
Short Stop's Convenience Store
(636) 398-4945

Tom Johnson

Farmers Insurance Group
(636) 332-1992

Tiffany Rovin

The Blondin Group REALTORS
(636) 398-5770



**St. Charles County
Day at the
Capitol**

January 29, 2008

Please join the St. Charles County League of Chambers for
**St. Charles County Day at the Capitol &
Showcase Reception at Capitol Plaza**

Tuesday, January 29, 2008 ★ 11:30am - 7:30pm

In order to maximize and showcase our region, all St. Charles County chamber members, county & city officials and civic leaders are encouraged to participate. Join us and be one of the delegates traveling to Jefferson City to personally meet with our state legislators and officials to increase their awareness and knowledge of our community.

There is no charge for participants, however a
RSVP is necessary to make appropriate arrangements.
To RSVP or for additional information contact your local Chamber.